

Don't check in  
Charles & Thomas  
Donald check at  
check in  
master in  
particular  
front of  
the building  
William Brown  
then  
Panel 20  
off of

825-26

16

~~SUNDAY~~

895-368

Arrange by: Due Date

Daily Task List

June 2019	July 2019
Sumo TuWe Th Fr Sa	Sumo TuWe Th Fr Sa
1	1 2 3 4 5 6
2 3 4 5 6 7 8	7 8 9 10 11 12 13
9 10 11 12 13 14 15	14 15 16 17 18 19 20
16 17 18 19 20 21 22	21 22 23 24 25 26 27
23 24 25 26 27 28 29	28 29 30 31

Date: 6-25-20

May 2020							June 2020						
Su	Mo	Tu	We	Th	Fr	Sa	Su	Mo	Tu	We	Th	Fr	Sa
						1	1	2	3	4	5	6	
3	4	5	6	7	8	9	7	8	9	10	11	12	13
10	11	12	13	14	15	16	14	15	16	17	18	19	20
17	18	19	20	21	22	23	21	22	23	24	25	26	27
24	25	26	27	28	29	30	28	29	30				
31													

Gondra Crumpley

Dug out out fall ditch

Sugar Hill rd. + little river rd.

7 AM

8

9

10

11

12 PM

1

2

3

4

5

6

Vicki

Date: \_\_\_\_\_

May 2020

June 2020

SuMo TuWe Th Fr Sa

	1	2	3	4	5	6
7	8	9	10	11	12	13
14	15	16	17	18	19	20
21	22	23	24	25	26	27
28	29	30				

7 <sup>AM</sup>	
8	
9	
10	
11	
12 <sup>PM</sup>	
1	
2	
3	
4	
5	
6	

Date: 8-25-20

Employee: William B Jackson

# 2284

December 2019

Su	Mo	Tu	We	Th	Fr	Sa
1	2	3	4	5	6	7
8	9	10	11	12	13	14
15	16	17	18	19	20	21
22	23	24	25	26	27	28
29	30	31				

January 2020

Su	Mo	Tu	We	Th	Fr	Sa
			1	2	3	4
5	6	7	8	9	10	11
12	13	14	15	16	17	18
19	20	21	22	23	24	25
26	27	28	29	30	31	

TUESDAY

3

7 AM

Fill in well

8

9

put up sign on Brantley

10

11

12 PM

1

check Roads

2

Rock to B.B. Bennett

3

4

Rock to R. Folsom

5



6



Date: 8-24-20

December 2019

January 2020

Su Mo Tu We Th Fr Sa

Su Mo Tu We Th Fr Sa

1 2 3 4 5 6 7  
8 9 10 11 12 13 14  
15 16 17 18 19 20 21  
22 23 24 25 26 27 28  
29 30 31

1 2 3 4  
5 6 7 8 9 10 11  
12 13 14 15 16 17 18  
19 20 21 22 23 24 25  
26 27 28 29 30 31

Employee: William G Jackson

#2284

~~TUESDAY~~ Monday

3

7 AM

Remove & haul all limbs on Antioch &  
Tom Sumner

8

9

10

11

12 PM

1

Back out on Wilkes Road hauling limbs off

2

3

4

5

6

June 2019

July 2019

Su	Mo	Tu	We	Th	Fr	Sa
						1
2	3	4	5	6	7	8
9	10	11	12	13	14	15
16	17	18	19	20	21	22
23	24	25	26	27	28	29
30						

Su	Mo	Tu	We	Th	Fr	Sa
						1
2	3	4	5	6	7	8
9	10	11	12	13	14	15
16	17	18	19	20	21	22
23	24	25	26	27	28	29
30	31					

SUNDAY

Thursday 08-20-20

Daily Task List

Arrange by: Due Date

16

Buck

7 AM

John Keigers Rd

8

J.C. Abbott

9

Nat Griffin Rd

10

Wright Rd

Lonestar School Rd

11

Needham Ln

12 PM

Washington Post Rd

1

Alabama Rd

2

Quille Jones Rd

3

Folsom Rd

Lasseter Rd

4

Arthur Ne.

EIK Rd

5

6

Notes

Date: 8-20-20

May 2020

Su	Mo	Tu	We	Th	Fr	Sa
					1	2
3	4	5	6	7	8	9
10	11	12	13	14	15	16
17	18	19	20	21	22	23
24	25	26	27	28	29	30
31						

June 2020

Su	Mo	Tu	We	Th	Fr	Sa
	1	2	3	4	5	6
7	8	9	10	11	12	13
14	15	16	17	18	19	20
21	22	23	24	25	26	27
28	29	30				

Buddy J. Full

7 AM

Loaded up trees EMC cut down on  
Ed Lindsey Rd and Wilkes Rd.

8

9

Loaded dirt out of ditch on  
Giddens Mill Pond.

10

11

12 PM

1

2

3

4

5

6

Date: 8-19-20

May 2020

Su	Mo	Tu	We	Th	Fr	Sa
					1	2
3	4	5	6	7	8	9
10	11	12	13	14	15	16
17	18	19	20	21	22	23
24	25	26	27	28	29	30
31						

June 2020

Su	Mo	Tu	We	Th	Fr	Sa
	1	2	3	4	5	6
7	8	9	10	11	12	13
14	15	16	17	18	19	20
21	22	23	24	25	26	27
28	29	30				

Buddy Fiddle

7 AM

Cleaned up down trees on Boyette Pond Rd.

8

Put in crossdrain on Bullard Rd.

9

Pushed limbs out of road on Bullard Rd.

10

Cleaned up trash on Industrial Dr.

11

12 PM

1

2

3

4

5

6

Date: 8-20-20

December 2019

January 2020

Su Mo Tu We Th Fr Sa

Su Mo Tu We Th Fr Sa

1 2 3 4 5 6 7  
8 9 10 11 12 13 14  
15 16 17 18 19 20 21  
22 23 24 25 26 27 28  
29 30 31

1 2 3 4  
5 6 7 8 9 10 11  
12 13 14 15 16 17 18  
19 20 21 22 23 24 25  
26 27 28 29 30 31

Employee: William B Jackson

~~TUESDAY~~ Thursday

3

7 AM

Remove & haul off trees for Colquitt EMC.  
Ed Taylor Rd

8

9

10

11

12 PM

1

Removing trees off Wilkes Rd

2

3

Remove all excess material from Giddens  
mill pond Rd.

4

5

6



Date: 8-20-20

May 2020

Su	Mo	Tu	We	Th	Fr	Sa
					1	2
3	4	5	6	7	8	9
10	11	12	13	14	15	16
17	18	19	20	21	22	23
24	25	26	27	28	29	30
31						

June 2020

Su	Mo	Tu	We	Th	Fr	Sa
	1	2	3	4	5	6
7	8	9	10	11	12	13
14	15	16	17	18	19	20
21	22	23	24	25	26	27
28	29	30				

Gondra & Frank

Put up Deadend Signs

7 AM

8

Smokey Wood lane

9

Circle J. Ranch rd.

10

Hillard rd. pot hole patch.

11

Lenox Brookfield rd. pot hole patch

Cleaned out end of pipe G.F.

12 PM

~~Leave~~

Gondra.

1

Cleaned track off

Dug out out fall ditch on Round tree Mechanic rd.

2

3

4

5

6

Date: \_\_\_\_\_

SuMo TuWe Th Fr Sa

SuMo TuWe Th Fr Sa

	1	2	3	4	5	6
7	8	9	10	11	12	13
14	15	16	17	18	19	20
21	22	23	24	25	26	27
28	29	30				

7 <sup>AM</sup>	
8	
9	
10	
11	
12 <sup>PM</sup>	
1	
2	
3	
4	
5	
6	

Date: 8-19-20

December 2019

January 2020

Su Mo Tu We Th Fr Sa

Su Mo Tu We Th Fr Sa

1 2 3 4 5 6 7  
8 9 10 11 12 13 14  
15 16 17 18 19 20 21  
22 23 24 25 26 27 28  
29 30 31

1 2 3 4  
5 6 7 8 9 10 11  
12 13 14 15 16 17 18  
19 20 21 22 23 24 25  
26 27 28 29 30 31

Employee: William B Jackson

~~TUESDAY~~ Wednesday

3

7 AM

Remove Trees & debris off Boyette pond Rd.

8

9

10

11

12 PM

Remove & Install pipe on Bullard Rd.

1

2

3

picking up appliances off South coast Industrial  
& 41 lift stations

4

5

6

June 2019

July 2019

Su	Mo	Tu	We	Th	Fr	Sa
						1
2	3	4	5	6	7	8
9	10	11	12	13	14	15
16	17	18	19	20	21	22
23	24	25	26	27	28	29
30						

Su	Mo	Tu	We	Th	Fr	Sa
						1
2	3	4	5	6	7	8
9	10	11	12	13	14	15
16	17	18	19	20	21	22
23	24	25	26	27	28	29
30	31					

~~SUNDAY~~ Wednesday 08-19-20

16 Buck

7 AM

Whidden-Rowan Rd

8



9

Morrison Creek Rd

10

Tillman Rd

11

Stripling Ln

Stephen Williams Ln

12 PM

1

McConnell Bridge Rd

Bear Ln

2

Giddens Millpond

3

Bag wood Dr.

4

Pull both sides and pull in  
Morrison Creek Rd

5

6

Daily Task List

Arrange by: Due Date

Notes

Date: 8-18-20

Employee: William B Jackson

December 2019

Su Mo Tu We Th Fr Sa

1	2	3	4	5	6	7
8	9	10	11	12	13	14
15	16	17	18	19	20	21
22	23	24	25	26	27	28
29	30	31				

January 2020

Su Mo Tu We Th Fr Sa

				1	2	3	4
5	6	7	8	9	10	11	
12	13	14	15	16	17	18	
19	20	21	22	23	24	25	
26	27	28	29	30	31		

TUESDAY

3

7 AM

Clean out ditch on Green Rd. & Val-del

8

Clean out ditch on Val-del & Varn Rd.

9

10

11

12 PM

Install pipe in Alley in Sparks

1

2

3

4/1 dump site cleanup

4

5

6



June 2019  
 Su Mo Tu We Th Fr Sa  
 1  
 2 3 4 5 6 7 8  
 9 10 11 12 13 14 15  
 16 17 18 19 20 21 22  
 23 24 25 26 27 28 29  
 30

July 2019  
 Su Mo Tu We Th Fr Sa  
 1 2 3 4 5 6  
 7 8 9 10 11 12 13  
 14 15 16 17 18 19 20  
 21 22 23 24 25 26 27  
 28 29 30 31

~~SUNDAY~~ Tuesday 08-18-20

16 Buck

\* Pull Ditches \*

Whiddon - Rowan Rd

Concord Ch. Rd

Tom Sumner Rd

Tom Sumner Ext.

Brushy Creek Ch. Rd

Ed Taylor Rd

Newberne Cut-off Rd

Newberne Rd

Homer Joiner Rd

Barrett Rd

Daily Task List

Arrange by: Due Date

Notes

Date: 8-18-20

May 2020

Su	Mo	Tu	We	Th	Fr	Sa
					1	2
3	4	5	6	7	8	9
10	11	12	13	14	15	16
17	18	19	20	21	22	23
24	25	26	27	28	29	30
31						

June 2020

Su	Mo	Tu	We	Th	Fr	Sa
	1	2	3	4	5	6
7	8	9	10	11	12	13
14	15	16	17	18	19	20
21	22	23	24	25	26	27
28	29	30				

Buddy Fuchs

7 AM

Hunted backhoe to John Henry shop.

8

Cleaned out ditches on Val Del Rd  
and Varn Rd and Green Dr.

9

Cleaned up 41 dumpsite.

10

Put in driveway in Sparks.

11

12 PM

1

2

3

4

5

6

Date: 8-17-20

May 2020

Su	Mo	Tu	We	Th	Fr	Sa
					1	2
3	4	5	6	7	8	9
10	11	12	13	14	15	16
17	18	19	20	21	22	23
24	25	26	27	28	29	30
31						

June 2020

Su	Mo	Tu	We	Th	Fr	Sa
	1	2	3	4	5	6
7	8	9	10	11	12	13
14	15	16	17	18	19	20
21	22	23	24	25	26	27
28	29	30				

Buddy Fuller

7 AM

Cleaned out ditches and fixed  
driveways on Morrison Creek Rd.  
and Tadpole Lane.

8

9

Put in driveways on Val Del and  
old Coffee Rd.

10

11

12 PM

1

2

3

4

5

6

Date: 8-17-20

Employee: William B Jackson

December 2019						
Su	Mo	Tu	We	Th	Fr	Sa
1	2	3	4	5	6	7
8	9	10	11	12	13	14
15	16	17	18	19	20	21
22	23	24	25	26	27	28
29	30	31				

January 2020						
Su	Mo	Tu	We	Th	Fr	Sa
			1	2	3	4
5	6	7	8	9	10	11
12	13	14	15	16	17	18
19	20	21	22	23	24	25
26	27	28	29	30	31	

~~TUESDAY~~ Monday

3

7 AM

Dressup two driveways, fill in hole beside road  
clean out ditch all on Morris Creek Road.

8

9

10

11

12 PM

Putting in<sup>2</sup> pipe on coffee + Val-del Rd.

2

3

4

5

6

Date: 08-17-20

Monday

May 2020

Su	Mo	Tu	We	Th	Fr	Sa
					1	2
3	4	5	6	7	8	9
10	11	12	13	14	15	16
17	18	19	20	21	22	23
24	25	26	27	28	29	30
31						

June 2020

Su	Mo	Tu	We	Th	Fr	Sa
	1	2	3	4	5	6
7	8	9	10	11	12	13
14	15	16	17	18	19	20
21	22	23	24	25	26	27
28	29	30				

Buck

7 AM

8

pull both ditches on Scarborough Rd

9



10

11

Circle S Ranch Rd

12 PM

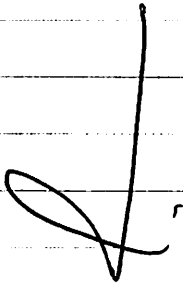
1

pull ditch @ Landfill

2

3

4



5

6



Date: \_\_\_\_\_

SuMo TuWe Th Fr Sa

SuMo TuWe Th Fr Sa

	1	2	3	4	5	6
7	8	9	10	11	12	13
14	15	16	17	18	19	20
21	22	23	24	25	26	27
28	29	30				

7 <sup>AM</sup>	
8	
9	
10	
11	
12 <sup>PM</sup>	
1	
2	
3	
4	
5	
6	

June 2019

July 2019

Su Mo Tu We Th Fr Sa

Su Mo Tu We Th Fr Sa

1  
2 3 4 5 6 7 8  
9 10 11 12 13 14 15  
16 17 18 19 20 21 22  
23 24 25 26 27 28 29  
30

1 2 3 4 5 6  
7 8 9 10 11 12 13  
14 15 16 17 18 19 20  
21 22 23 24 25 26 27  
28 29 30 31

SUNDAY

Daily Task List

Arrange by: Due Date

16

Buck

08-14-20 Friday

7 AM

8

Guy Coppage Rd

9

Sanders Rd

10

Hamilton Rd

11

B. Futch Rd

12 PM

1

Shady Grove Rd

2

Scarborough Rd

3

4

5

6

Notes

Date: Thursday 08-13-20

May 2020						
Su	Mo	Tu	We	Th	Fr	Sa
					1	2
3	4	5	6	7	8	9
10	11	12	13	14	15	16
17	18	19	20	21	22	23
24	25	26	27	28	29	30
31						

June 2020						
Su	Mo	Tu	We	Th	Fr	Sa
	1	2	3	4	5	6
7	8	9	10	11	12	13
14	15	16	17	18	19	20
21	22	23	24	25	26	27
28	29	30				

Buck

7 AM

pull ditch on Quille Jones Rd

8

9

10



11

Ernest Flowers

12 PM

1

Eason Stalvey Rd

2

Touchnon Rd

3

John Lowart Cir

4

5

6

Date: \_\_\_\_\_

May 2020						
Su	Mo	Tu	We	Th	Fr	Sa
					1	2
3	4	5	6	7	8	9
10	11	12	13	14	15	16
17	18	19	20	21	22	23
24	25	26	27	28	29	30
31						

June 2020						
Su	Mo	Tu	We	Th	Fr	Sa
	1	2	3	4	5	6
7	8	9	10	11	12	13
14	15	16	17	18	19	20
21	22	23	24	25	26	27
28	29	30				

7 <sup>AM</sup>	
8	
9	
10	
11	
12 <sup>PM</sup>	
1	
2	
3	
4	
5	
6	

Wednesday

TUESDAY

8-12-20

4

William B Jackson

7 AM

Dug out ditch on Shady Grove

8

9

10

11

Dug out ↓ ditch in sub-division  
off Coffee Rd.

12 PM

Colquitt Emc cut down trees  
on Brushy creek to be haul off  
by us.

1

2

3

4

5

6

Daily Task List

Arrange by: Due Date

Notes



Date: 8-12-20

May 2020

Su	Mo	Tu	We	Th	Fr	Sa
					1	2
3	4	5	6	7	8	9
10	11	12	13	14	15	16
17	18	19	20	21	22	23
24	25	26	27	28	29	30
31						

June 2020

Su	Mo	Tu	We	Th	Fr	Sa
	1	2	3	4	5	6
7	8	9	10	11	12	13
14	15	16	17	18	19	20
21	22	23	24	25	26	27
28	29	30				

Gondra Crumblers

Cleaned out ditches load trucks

7 AM

8 Shady Grove rd.

9

10

11

12 PM

Farmingdon dr.

1

2

3

4

5

6

Date: \_\_\_\_\_

May 2020

June 2020

	1	2	3	4	5	6
7	8	9	10	11	12	13
14	15	16	17	18	19	20
21	22	23	24	25	26	27
28	29	30				

6

Date: 8-12-2020

May 2020

Su	Mo	Tu	We	Th	Fr	Sa
					1	2
3	4	5	6	7	8	9
10	11	12	13	14	15	16
17	18	19	20	21	22	23
24	25	26	27	28	29	30
31						

June 2020

Su	Mo	Tu	We	Th	Fr	Sa
	1	2	3	4	5	6
7	8	9	10	11	12	13
14	15	16	17	18	19	20
21	22	23	24	25	26	27
28	29	30				

Buddy Frubb

7 AM

Cleaned out ditches and pipes  
on Bob Lindsey Rd and Summer  
Airport Rd.

8

9

Removed tree off Boushy Creek Rd.

10

11

12 PM

1

2

3

4

5

6

Date: 8-13-2020

May 2020

Su	Mo	Tu	We	Th	Fr	Sa
					1	2
3	4	5	6	7	8	9
10	11	12	13	14	15	16
17	18	19	20	21	22	23
24	25	26	27	28	29	30
31						

June 2020

Su	Mo	Tu	We	Th	Fr	Sa
	1	2	3	4	5	6
7	8	9	10	11	12	13
14	15	16	17	18	19	20
21	22	23	24	25	26	27
28	29	30				

Buddy Falls

7 AM

Replaced 2 tires on Lowboy.

8

Put in driveway on Whitehurst Rd.

9

Fixed big hole on Amber Court Rd  
and Brandy Lane.

10

11

12 PM

1

2

3

4

5

6

TUESDAY

8-11-20

Daily Task List

Arrange by: Due Date

4 William B Jackson

7 AM

Finished up pipe on passish lane

8

9

10

Sand to Byron corner

11

12 PM

Rock to Shady Grove Rd.

1

2

3

Haul sand to yard

4

5

6

Notes

Date: 8-11-2020

May 2020						
Su	Mo	Tu	We	Th	Fr	Sa
					1	2
3	4	5	6	7	8	9
10	11	12	13	14	15	16
17	18	19	20	21	22	23
24	25	26	27	28	29	30
31						

June 2020						
Su	Mo	Tu	We	Th	Fr	Sa
	1	2	3	4	5	6
7	8	9	10	11	12	13
14	15	16	17	18	19	20
21	22	23	24	25	26	27
28	29	30				

Buddy Tralls

7 AM

Cleaned out box culvert on Old Union Rd.

8

9

Picked up mowermax from River Trace and carried to Greggs Rd.

10

Hauled excavator from Sugar Hill Rd to Brushy Creek Rd.

11

Carried mowermax back to River Trace.

12 PM

1

Spread crushed concrete in drive on Greggs Rd.

2

3

4

5

6



Date: 8-10-2020

May 2020

Su	Mo	Tu	We	Th	Fr	Sa
					1	2
3	4	5	6	7	8	9
10	11	12	13	14	15	16
17	18	19	20	21	22	23
24	25	26	27	28	29	30
31						

June 2020

Su	Mo	Tu	We	Th	Fr	Sa
		1	2	3	4	5
6	7	8	9	10	11	12
13	14	15	16	17	18	19
20	21	22	23	24	25	26
27	28	29	30			

Buddy Trubbs

7 AM

Put in driveway on Well Purvis Rd.

8

Cleaned out beaver pipes.

9

10

11

12 PM

1

2

3

4

5

6

Date: 8-11-20

May 2020

Su	Mo	Tu	We	Th	Fr	Sa
					1	2
3	4	5	6	7	8	9
10	11	12	13	14	15	16
17	18	19	20	21	22	23
24	25	26	27	28	29	30
31						

June 2020

Su	Mo	Tu	We	Th	Fr	Sa
	1	2	3	4	5	6
7	8	9	10	11	12	13
14	15	16	17	18	19	20
21	22	23	24	25	26	27
28	29	30				

Gondra Crumblax

7 AM

dug ditches out put in 20x20 driveway pipe.  
parrish ln.

8

9

10

11

12 PM

1

2

3

4

Drove to Shady Grove rd.

5

6

Date: \_\_\_\_\_

May 2020

June 2020

Su Mo Tu We Th Fr Sa

	1	2	3	4	5	6
7	8	9	10	11	12	13
14	15	16	17	18	19	20
21	22	23	24	25	26	27
28	29	30				

7 <sup>AM</sup>	
8	
9	
10	
11	
12 <sup>PM</sup>	
1	
2	
3	
4	
5	
6	

Date: 8/11/2020

May 2020

Su	Mo	Tu	We	Th	Fr	Sa
					1	2
3	4	5	6	7	8	9
10	11	12	13	14	15	16
17	18	19	20	21	22	23
24	25	26	27	28	29	30
31						

June 2020

Su	Mo	Tu	We	Th	Fr	Sa
	1	2	3	4	5	6
7	8	9	10	11	12	13
14	15	16	17	18	19	20
21	22	23	24	25	26	27
28	29	30				

*[Handwritten signature]*

7 AM

8

Checked roads for wash out

9

Also scraped  
Whiddow Rowan Rd  
Concord Church Rd.

10

11

12 PM

1

2

3

4

5

6

Date: \_\_\_\_\_

May 2020

Su	Mo	Tu	We	Th	Fr	Sa
					1	2
3	4	5	6	7	8	9
10	11	12	13	14	15	16
17	18	19	20	21	22	23
24	25	26	27	28	29	30
31						

June 2020

Su	Mo	Tu	We	Th	Fr	Sa
	1	2	3	4	5	6
7	8	9	10	11	12	13
14	15	16	17	18	19	20
21	22	23	24	25	26	27
28	29	30				

7 AM	
8	
9	
10	
11	
12 PM	
1	
2	
3	
4	
5	
6	

Date: 8/11/2020

May 2020						
Su	Mo	Tu	We	Th	Fr	Sa
					1	2
3	4	5	6	7	8	9
10	11	12	13	14	15	16
17	18	19	20	21	22	23
24	25	26	27	28	29	30
31						

June 2020						
Su	Mo	Tu	We	Th	Fr	Sa
	1	2	3	4	5	6
7	8	9	10	11	12	13
14	15	16	17	18	19	20
21	22	23	24	25	26	27
28	29	30				

Riley Brown

7 AM

8

checked roads for wash outs.

9

10

Also SCRAPED. Whiddon Down Rd  
Concord Church Rd

11

12 PM

1

2

3

4

5

6



Date: \_\_\_\_\_

May 2020

Su	Mo	Tu	We	Th	Fr	Sa
					1	2
3	4	5	6	7	8	9
10	11	12	13	14	15	16
17	18	19	20	21	22	23
24	25	26	27	28	29	30
31						

June 2020

Su	Mo	Tu	We	Th	Fr	Sa
	1	2	3	4	5	6
7	8	9	10	11	12	13
14	15	16	17	18	19	20
21	22	23	24	25	26	27
28	29	30				

7<sup>AM</sup>

8

9

10

11

12<sup>PM</sup>

1

2

3

4

5

6

Date: 8-10-20

May 2020

Su	Mo	Tu	We	Th	Fr	Sa
					1	2
3	4	5	6	7	8	9
10	11	12	13	14	15	16
17	18	19	20	21	22	23
24	25	26	27	28	29	30
31						

June 2020

Su	Mo	Tu	We	Th	Fr	Sa
	1	2	3	4	5	6
7	8	9	10	11	12	13
14	15	16	17	18	19	20
21	22	23	24	25	26	27
28	29	30				

Dug out ditch  
Hitchinson parrish rd

Put 20x30 driveway pipe in. on parrish ln.

Date: \_\_\_\_\_

Su	Mo	Tu	We	Th	Fr	Sa
					1	2
3	4	5	6	7	8	9
10	11	12	13	14	15	16
17	18	19	20	21	22	23
24	25	26	27	28	29	30
31						

Su	Mo	Tu	We	Th	Fr	Sa
	1	2	3	4	5	6
7	8	9	10	11	12	13
14	15	16	17	18	19	20
21	22	23	24	25	26	27
28	29	30				

7 <sup>AM</sup>	
8	
9	
10	
11	
12 <sup>PM</sup>	
1	
2	
3	
4	
5	
6	

Date: 8/10/2020

May 2020

Su	Mo	Tu	We	Th	Fr	Sa
					1	2
3	4	5	6	7	8	9
10	11	12	13	14	15	16
17	18	19	20	21	22	23
24	25	26	27	28	29	30
31						

June 2020

Su	Mo	Tu	We	Th	Fr	Sa
	1	2	3	4	5	6
7	8	9	10	11	12	13
14	15	16	17	18	19	20
21	22	23	24	25	26	27
28	29	30				

Ricky Brown

7 AM

8

Ed Taylor Rd.  
NEWBERNE Cutoff Rd

9

NEWBERNE Rd  
Tom <sup>Summer</sup> ~~Summer~~ Rd

10

Brushy Creek Church Rd  
Sandy Ln

11

12 PM

1

2

3

4

5

6

Date: \_\_\_\_\_

May 2020

June 2020

SuMo TuWe Th Fr Sa

	1	2	3	4	5	6
7	8	9	10	11	12	13
14	15	16	17	18	19	20
21	22	23	24	25	26	27
28	29	30				

7 <sup>AM</sup>	
8	
9	
10	
11	
12 <sup>PM</sup>	
1	
2	
3	
4	
5	
6	

Date: 8/10/2020

Thomas Hancock

May 2020						
Su	Mo	Tu	We	Th	Fr	Sa
					1	2
3	4	5	6	7	8	9
10	11	12	13	14	15	16
17	18	19	20	21	22	23
24	25	26	27	28	29	30
31						

June 2020						
Su	Mo	Tu	We	Th	Fr	Sa
	1	2	3	4	5	6
7	8	9	10	11	12	13
14	15	16	17	18	19	20
21	22	23	24	25	26	27
28	29	30				

7 AM

8

Ed Taylor Rd

Newberry Cutoff Rd.

9

NEWBERNE Rd.

Tom <sup>SUMNER</sup> ~~SUMNER~~ Rd.

10

Brushy Creek Church Rd.

Sandy Ln.

11

12 PM

1

2

3

4

5

6



Date: \_\_\_\_\_

**SuMo TuWe Th Fr Sa**

						1	2
3	4	5	6	7	8	9	
10	11	12	13	14	15	16	
17	18	19	20	21	22	23	
24	25	26	27	28	29	30	
31							

SuMo TuWe Th Fr Sa

	1	2	3	4	5	6
7	8	9	10	11	12	13
14	15	16	17	18	19	20
21	22	23	24	25	26	27
28	29	30				

7 <sup>AM</sup>	
8	
9	
10	
11	
12 <sup>PM</sup>	
1	
2	
3	
4	
5	
6	

June 2019

Su	Mo	Tu	We	Th	Fr	Sa
						1
2	3	4	5	6	7	8
9	10	11	12	13	14	15
16	17	18	19	20	21	22
23	24	25	26	27	28	29
30						

July 2019

Su	Mo	Tu	We	Th	Fr	Sa
	1	2	3	4	5	6
7	8	9	10	11	12	13
14	15	16	17	18	19	20
21	22	23	24	25	26	27
28	29	30	31			

~~SUNDAY~~

Daily Task List

Arrange by: Due Date

16 Buck 08-10-20

7 AM

8 B. Futch Rd pull both ditches

9 Tarrant Rd pull both ditches

10 Boone Rd pull northside ditch

11 ↓

12 PM

1

2 Rowen Rd pull both ditches

3 Vanbrackle Rd

4 Howard Bennett Rd

5 Rain Out

6

Notes

Monday

TUESDAY

Aug 10, 2020

4

William B Jackson

7 AM

put in driveway pipe on  
Nell Purvis

8

9

10

11

12 PM

putting in two pipe on Parrish  
lane

1

2

3

4

5

6

In complete RAIN

Daily Task List

Arrange by: Due Date

Notes

Date: 8-6-2020

May 2020						
Su	Mo	Tu	We	Th	Fr	Sa
					1	2
3	4	5	6	7	8	9
10	11	12	13	14	15	16
17	18	19	20	21	22	23
24	25	26	27	28	29	30
31						

June 2020						
Su	Mo	Tu	We	Th	Fr	Sa
	1	2	3	4	5	6
7	8	9	10	11	12	13
14	15	16	17	18	19	20
21	22	23	24	25	26	27
28	29	30				

Buddy Trull

7 AM

Cleaned up trees and brush off corner of Honey moon Lane.

8

Replaced cross drain on B Fatch Rd.

9

10

Cleaned out beaver pipes on Cranford Sumner and Rowan Rd.

11

12 PM

1

2

3

4

5

6

Date: 8-5-2020

May 2020

Su	Mo	Tu	We	Th	Fr	Sa
						1 2
3	4	5	6	7	8	9
10	11	12	13	14	15	16
17	18	19	20	21	22	23
24	25	26	27	28	29	30
31						

June 2020

Su	Mo	Tu	We	Th	Fr	Sa
		1	2	3	4	5 6
7	8	9	10	11	12	13
14	15	16	17	18	19	20
21	22	23	24	25	26	27
28	29	30				

Bushy Trunk

7 AM

Put in 2 driveways and dug out ditch on Shaw Lane.

8

9

10

11

12 PM

1

2

3

4

5

6

Date: 8-6-20

May 2020

Su	Mo	Tu	We	Th	Fr	Sa
					1	2
3	4	5	6	7	8	9
10	11	12	13	14	15	16
17	18	19	20	21	22	23
24	25	26	27	28	29	30
31						

June 2020

Su	Mo	Tu	We	Th	Fr	Sa
	1	2	3	4	5	6
7	8	9	10	11	12	13
14	15	16	17	18	19	20
21	22	23	24	25	26	27
28	29	30				

Gondra Crumley

dug out ditches

7 AM

Hitchinson Parrish rd

Howard Bennett rd

8

9

10

11

12 PM

1

2

3

4

5

6



Date: \_\_\_\_\_

Su	Mo	Tu	We	Th	Fr	Sa
					1	2
3	4	5	6	7	8	9
10	11	12	13	14	15	16
17	18	19	20	21	22	23
24	25	26	27	28	29	30
31						

Su	Mo	Tu	We	Th	Fr	Sa
	1	2	3	4	5	6
7	8	9	10	11	12	13
14	15	16	17	18	19	20
21	22	23	24	25	26	27
28	29	30				

6

8-6-20

Date: ~~7-23-20~~

December 2019

January 2020

Su	Mo	Tu	We	Th	Fr	Sa
1	2	3	4	5	6	7
8	9	10	11	12	13	14
15	16	17	18	19	20	21
22	23	24	25	26	27	28
29	30	31				

Su	Mo	Tu	We	Th	Fr	Sa
				1	2	3
4	5	6	7	8	9	10
11	12	13	14	15	16	17
18	19	20	21	22	23	24
25	26	27	28	29	30	31

Employee: William B Jackson

~~TUESDAY~~ Thursday

3

7 AM

Back out on Hutchinson-Parrish digging ditch

8

9

10

11

12 PM

1

2

3

4

And to Shaw Lane

5

6

June 2019							July 2019						
Su	Mo	Tu	We	Th	Fr	Sa	Su	Mo	Tu	We	Th	Fr	Sa
						1		1	2	3	4	5	6
2	3	4	5	6	7	8	7	8	9	10	11	12	13
9	10	11	12	13	14	15	14	15	16	17	18	19	20
16	17	18	19	20	21	22	21	22	23	24	25	26	27
23	24	25	26	27	28	29	28	29	30	31			
30													

SUNDAY

16 Buck Wednesday 08-05-20

7 AM

8

Coy J Mathis Ln  
Krisco 1

Daily Task List

Arrange by: Due Date

Date: 8-25-2020

May 2020							June 2020						
Su	Mo	Tu	We	Th	Fr	Sa	Su	Mo	Tu	We	Th	Fr	Sa
						1 2		1	2	3	4	5	6
3	4	5	6	7	8	9	7	8	9	10	11	12	13
10	11	12	13	14	15	16	14	15	16	17	18	19	20
17	18	19	20	21	22	23	21	22	23	24	25	26	27
24	25	26	27	28	29	30	28	29	30				
31													

Buddy Frank

7 AM

Filled in old well on Lonnie Grimesky Rd.

8

Fixed pipe and cleaned out ditches  
on Godwin Rd.

9

Put gravel on BB Bennett Rd.

10

cleaned dirt off Old Quitman Rd.

11

12 PM

1

2

3

4

5

6

5	
6	

Date: 8-26-2020

May 2020

Su	Mo	Tu	We	Th	Fr	Sa
					1	2
3	4	5	6	7	8	9
10	11	12	13	14	15	16
17	18	19	20	21	22	23
24	25	26	27	28	29	30
31						

June 2020

Su	Mo	Tu	We	Th	Fr	Sa
	1	2	3	4	5	6
7	8	9	10	11	12	13
14	15	16	17	18	19	20
21	22	23	24	25	26	27
28	29	30				

Buddy Fuchs

7 AM

Fixed pipe on Nipper Rd Extension.

8

Cleaned out pipes on Nipper Rd.

9

Cleaned out pipes on Springhill Rd.

10

11

12 PM

1

2

3

4

5

6

Date: \_\_\_\_\_

May 2020

Su	Mo	Tu	We	Th	Fr	Sa
					1	2
3	4	5	6	7	8	9
10	11	12	13	14	15	16
17	18	19	20	21	22	23
24	25	26	27	28	29	30
31						

June 2020

Su	Mo	Tu	We	Th	Fr	Sa
	1	2	3	4	5	6
7	8	9	10	11	12	13
14	15	16	17	18	19	20
21	22	23	24	25	26	27
28	29	30				

7 AM

8

9

10

11

12 PM

1

2

3

4

5

6



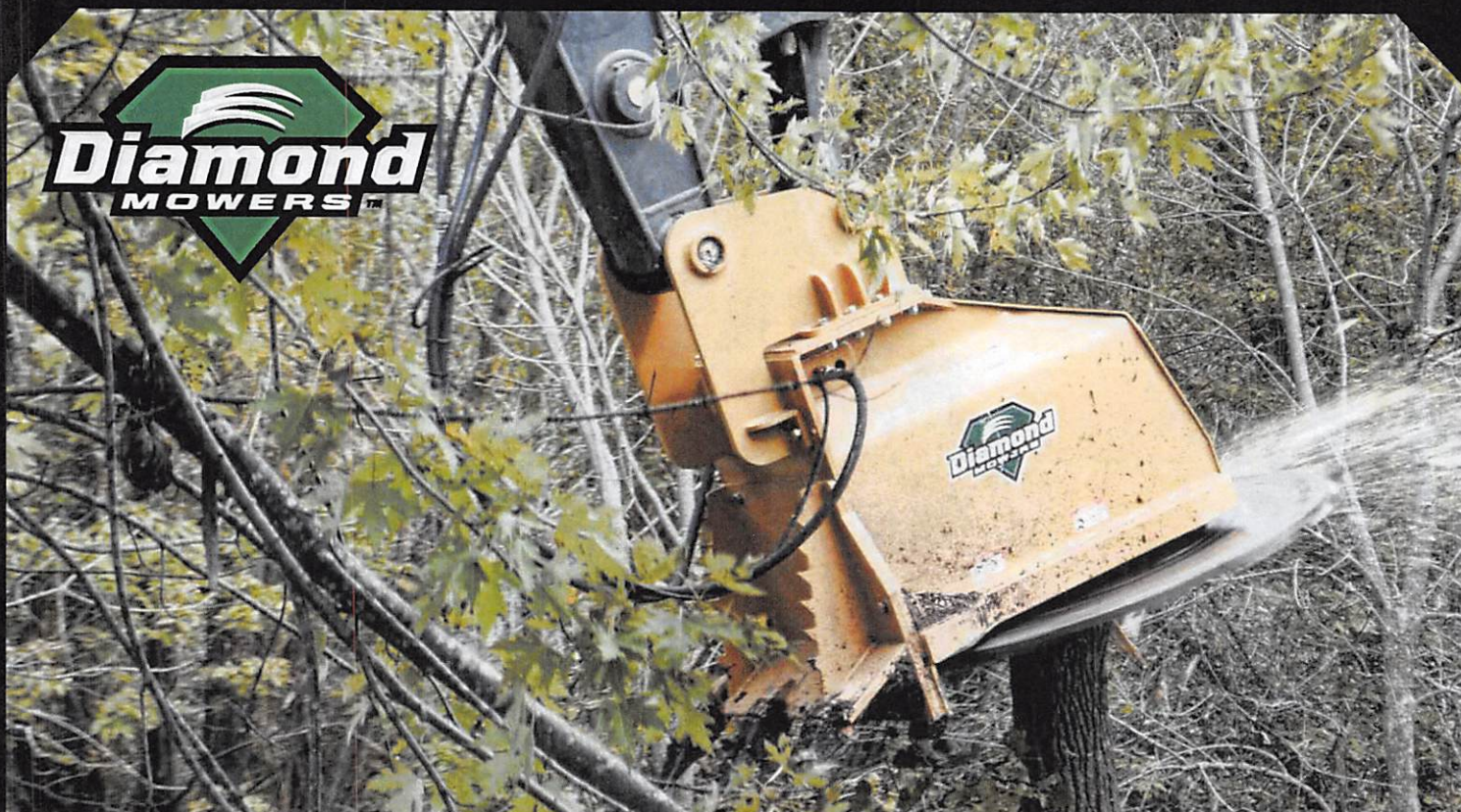
EXCAVATOR ATTACHMENTS



**HEAVY DUTY.**

**FAST.  
RELIABLE.  
HUNGRY.**





# DEVOURING *THE* COMPETITION.

At Diamond Mowers, no job is too big and no work is unimportant. We build the toughest, most reliable and safest heavy-duty equipment in the business. Our Excavator Forestry and Rotary Attachments are the best. It's that simple. Demand Better. **DEMAND DIAMOND.**



+



+



## **PROUD TO BE MADE IN THE USA**

At Diamond Mowers, our job is to help you do your job better. We take great satisfaction in where we build our equipment and how we do it. American values and a Midwestern work ethic are in our company DNA. Every Diamond product comes standard with our guarantee of excellence, and decades of integrity and pride built right in.

## **THE DIAMOND MOWERS GUARANTEE**

At Diamond Mowers, we don't just say we take pride in our work. We show it. Every Diamond product comes with a 100% Satisfaction Guarantee and a 72-hour Parts Shipping Guarantee.



## EXCAVATOR ROTARY MOWER



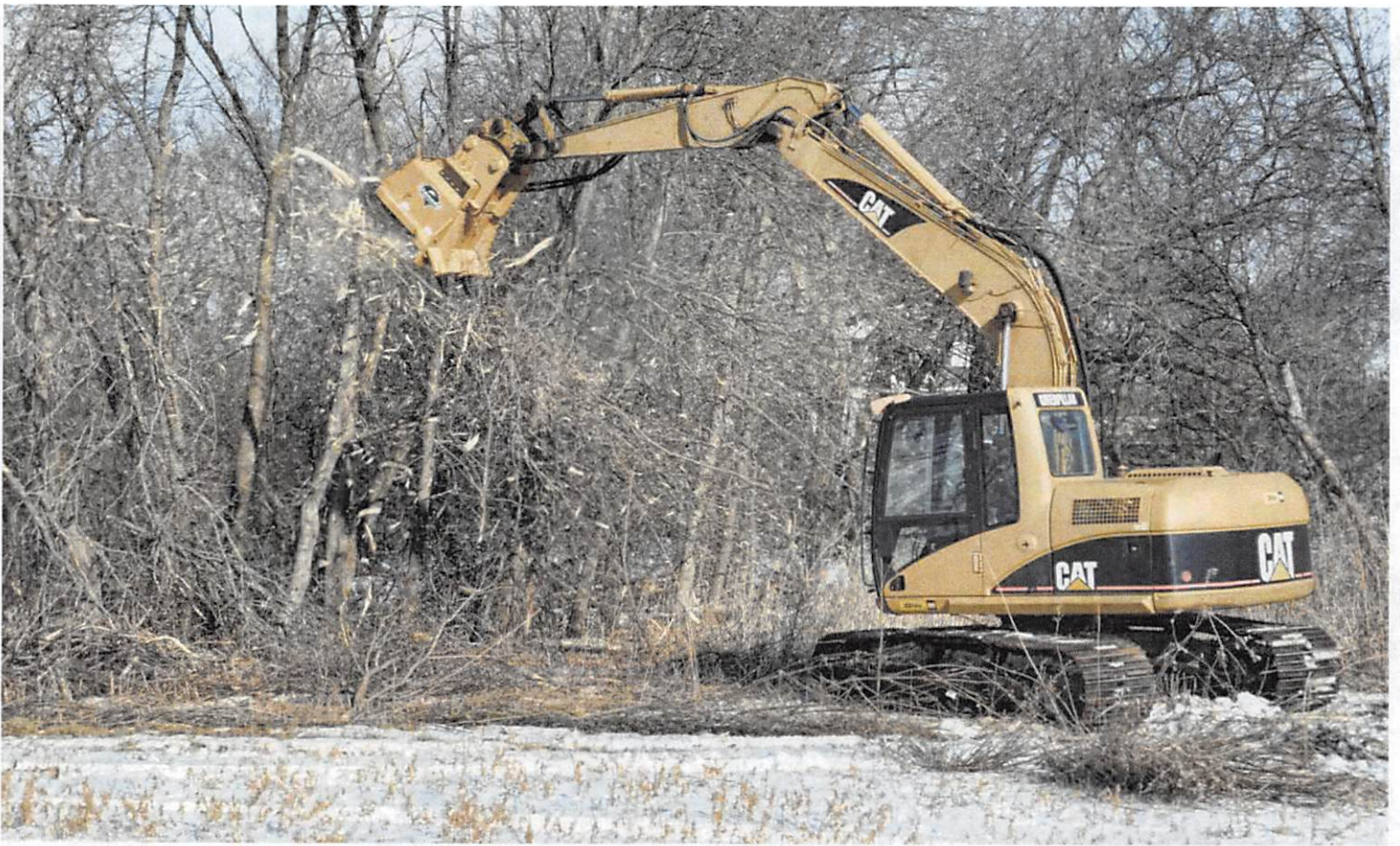
***BIG(50"). BIGGER(60"). BIGGEST(72").***

### **Excavator Rotary Mowers**

When it comes to toughness, no one touches Diamond's 50", 60", and 72" heavy duty Rotary Mowers. Every hydraulically driven head comes equipped with a custom mounting mast to fit your excavator. Each size will cut trees or brush up to 10" thick, and features a deck shell open on the left and right for enhanced production. No matter the size of the job, Diamond gets it done.



# EXCAVATOR FORESTRY MULCHER



## AN APPETITE FOR DESTRUCTION

No matter how big the job, Diamond will make it look like an appetizer. The Excavator Forestry Mulcher is loaded with made-in-the-USA innovations, cutting as clean and quick as a chainsaw, and with the ability to mulch material finely enough for decomposition. More productive than a traditional drum style forestry head, Diamond's Excavator Forestry Mulcher has hardened steel and replaceable teeth to cut trees and stumps to the ground.

For jobs that call for more than just a mower, this excavator-mounted forestry head doesn't just clear trees, it devours them.

### LOW MAINTENANCE

The head's direct-drive spindle is equipped with rollers, spherical bearings on top and bottom – the same bearings used in the rock crushing industry – built to handle massive amounts of vibration, shock, and impact without incurring any damage. This spindle only needs to be serviced by greasing every 500 hours.

SEE THE EXCAVATOR FORESTRY MULCHER IN ACTION AT  
**[DIAMONDMOWERS.COM](http://DIAMONDMOWERS.COM)**

### TOUGH COMES IN ALL SIZES

Head Size	Material	Total Weight	Operating Requirements
36"	Cuts 6" / Mulches 4"	925 lb.	24 - 32 GPM / 3,000 - 3,500 PSI
48"	Cuts 10" / Mulches 6"	2,150 lb.	40 - 80 GPM / 3,000 - 3,500 PSI

Note: For optimal performance, excavators must run 3,000-3,500 psi at operating flow. Recommend head to run with priority valve.



# EXCAVATOR ROTARY MOWER



## NO TIME TO WASTE.

Not every job allows you the luxury of time, but you still need every job done right. That's why you use a Diamond Rotary Mower.

## TOUGH. VERSATILE. GUARANTEED.

The Diamond Rotary Mower is the most rugged rotary brush cutter on the market. It's mower shell is built with 100,000 psi steel housing—nearly three times stronger than standard A36 steel—and comes with a 1-year warranty on all parts and labor.

### TOUGH COMES IN ALL SIZES

Head Size	Material	Total Weight	Operating Requirements
40" (Mini)	Cuts up to 4" material	550 lb.	16 - 39 GPM / 2,500 - 3,500 PSI
50"	Cuts up to 10" material	1,300 lb.	24 - 46 GPM / 3,000 - 3500 PSI
60"	Cuts up to 10" material	1,450 lb.	20 - 46 GPM / 3,000 - 3500 PSI
72"	Cuts up to 10" material	2,400 lb.	16 - 41 GPM / 3,000 - 3500 PSI

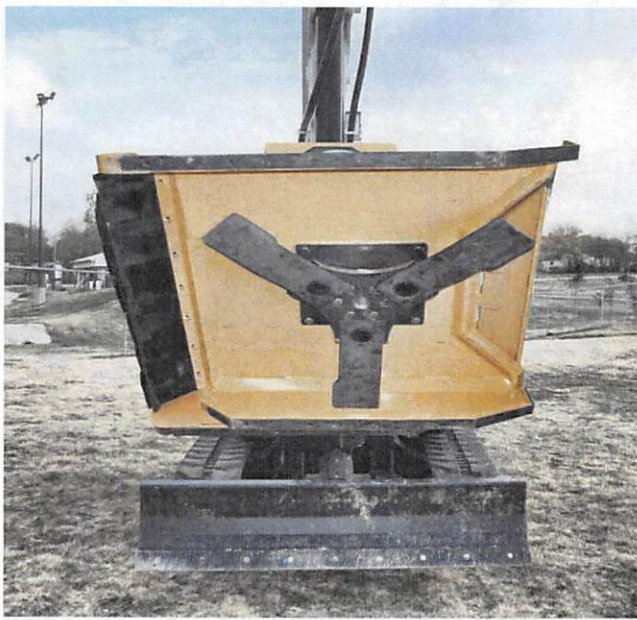


## EXCAVATOR ROTARY MOWER

# DON'T CALL IT "THE MINI" TO ITS FACE

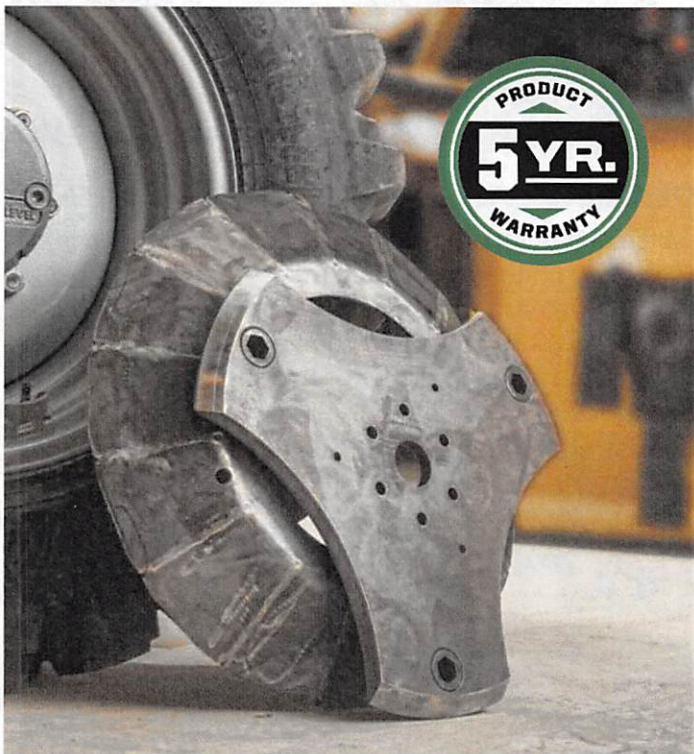
### The 40" "Mini" Excavator Rotary Mower

Ferocious things come in small packages. The heavy duty, hydraulically driven "Mini" slices trees or brush up to 4" thick. And it's smart, too. It's spring loaded, retractable shield deflects debris even as it protects the operator from the knife blades. Not bad for a "little" guy.



## THE TRI-HEX ADVANTAGE

### The Diamond Tri-Hex Mulching Disc & Reinforcing Ring



Diamond's proprietary Tri-Hex mulching disc on our rotary mowers provides greater inertia in tough conditions, and prevents material build-up between the deck and blade carrier. The disc is constructed of 1" thick 50,000 psi rated steel with hardened, replaceable inserts, giving you unparalleled durability and easy blade maintenance.

Blades attach to the Tri-Hex with castle nuts, roll pins, and hex bolts that have 3,000% more load bearing surface than traditional key style bolts. The bolt insert is made of harder steel than the disc. When wear occurs the insert can be easily replaced instead of the whole disc.

Diamond's exclusive Reinforcing Ring transfers the load from the center well to the deck structure, reducing stress on the weld joints and making the larger rotary mowers even more durable.

All of this is just a fancy way of saying Diamond Tri-Hex discs are just about the toughest things on Earth.

And all Tri-Hex mulching discs are covered by an unprecedented 5-year warranty. Not that you'll need it.



# EXCAVATOR FORESTRY MULCHER



## SAFE FOR YOU. DEADLY FOR TREES.

Like all Diamond equipment, heavy-duty safety is built right into the Excavator Forestry Mulcher. The 36" mulcher includes an open front that exposes the blade to feed material quickly, while steel deflectors with full casing direct material downward after it's mulched. With Diamond, you'll never sacrifice for performance.

***Demand Safety. Demand Diamond.***



**36" FORESTRY MULCHER**

### CUTTING POWER

Diamond's unique design includes teeth on the perimeter of the blade, as well as cutting teeth and knives on the bottom of the disc to allow the head to come straight down on top of trees.

Replaceable, hardened steel teeth cut cleanly and efficiently. With the ability to cut on all four sides, the teeth can be rotated for longer life.

Patented center-mounted teeth eliminate a dead spot that other equipment encounters, making Diamond's Forestry Mulcher faster and more effective.

### THE EXCAVATOR FORESTRY MULCHER IS DESIGNED EXCLUSIVELY FOR BRUSH CUTTING APPLICATIONS:

- Cuts up to 6" material
- Very fast production - Up to 10x faster than a rotary head
- Cuts with both the perimeter and bottom surface
- Ability to mulch material
- Highly efficient, hardened steel, replaceable teeth



## BEAT THE DRUM

When you compare the two, Diamond's Forestry Mulcher will beat a drum style head every time.

### EXCAVATOR FORESTRY ATTACHMENTS

	Drum Style	Diamond Forestry
<b>Horsepower</b>	Limited to hydraulic horsepower of the machine	Disc design creates more power using inertia built up in the dish - Quickly gather and process trees
<b>Energy Storage</b>	Only has as much power available as the excavator can produce	Acts like a flywheel, storing more energy and allowing more power available for cutting
<b>Material Size</b>	Produces sawdust chips that clog filters and coolers	Produces material approximately 2" in diameter - quick decomposition. No clogging.
<b>Teeth</b>	Typically use carbide teeth that act like a sledgehammer, using more energy to cut the same amount of wood	Uses hardened steel teeth - cut through material much more efficiently, like an ax
<b>Chew vs. Cut</b>	Chews through the tree, taking much longer	Acts as a giant saw, slicing through standing trees with ease
<b>Ground Level</b>	Stops at ground level, leaving a stump	Disc style allows you to cut below ground level. Try that with a drum.
<b>Pulleys vs. Spindle</b>	Uses pulleys and belts with multiple failure points	Our drive spindle is simple and direct - with millions of hours of accumulated time on this spindle
<b>Exhaust Control</b>	Direct exhausted material straight down, leaving a pile that is difficult to deal with later	Spreads material out to a wide area

*Have trees too large to mulch? Diamond's Excavator Forestry thumb grabber tool can be used to move or pile cut trees. It's like having a feller-buncher built right into the head.*

800-658-5561



350 EAST 60TH ST. N.  
SIOUX FALLS, SD 57104

**DEMAND BRILLIANCE.**

For more details, go to [DiamondMowers.com](http://DiamondMowers.com).

**72-HOUR PARTS  
SHIPPING GUARANTEE**

**BEST  
PRICE  
GUARANTEE**  
ON ALL PARTS

**100% SATISFACTION  
GUARANTEE**  
★ GET IT, LOVE IT & LEAVE IT! ★





Estimate No:89230 - 1

COOK CO BD OF COMMISSIONERS  
1200 S HUTCHINSON AVE  
ADEL 31620-5218

CUSTOMER NO.	ESTIMATE NO.	DATE	CONTACT
802928	89230	8/20/2020	RUSTY MCCRANIE
PHONE NO.	FAX NO.	EMAIL	
229.507.4237		roads037@icloud.com	
MODEL	MAKE	SERIAL NO.	
M318F	AA	0FB800583	
UNIT NO.	HOURS	WO NO.	P.O. NO.
	1142		
ESTIMATE DESCRIPTION:		DIAMOND MOWER	

SEGMENT: 01 ORDER PARTS ONLY MOWER ATTACHMENT (119 9800)

Part Number	Description	Qty	Unit Price	PartDiscount	Discount %	Ext Price
DER060-C	60" EXCAVATOR ROTARY MOWER	1	16,846.00	0.0000	10.00	15,161.40
LINES AND FITTINGS	LINES AND FITTINGS	1	1,500.00	0.0000	0.00	1,500.00

Total Estimated Parts: 16,661.40

Item Number	Description	Qty	Unit Price	Discount %	Ext Price
SHP	INSTALL MOWER MAKE UP LINES AND INSTALL, SET UP AND SET FLOW	4	142.00	0.00	568.00

Total Estimated Labor: 568.00

Item Number	Description	Qty	Unit Price	Discount %	Ext Price
FRT	FRIGHT IN	1	800.00	0.00	800.00

Total Estimated Misc: 800.00

Segment 01 Total: 18,029.40

Total Segments: 18,029.40

**SUB TOTAL (BEFORE TAXES) 18,029.40**

-This estimate will expire 30 days from the estimate date.  
-Price excludes Freight Charges, Operating Supplies/EPA Fees and Overtime.  
-Terms: Net 30  
-Sales Taxes where applicable are not included with the above prices.

**ESTIMATED REPAIR TIME:** \_\_\_\_\_ *from start date*  
*"The signature is an authorization to proceed with the required repair work as described within the quote"*

**Issued PO#:** \_\_\_\_\_ **Authorized Name:** \_\_\_\_\_ **Please Print**

**Date:** \_\_\_\_/\_\_\_\_/\_\_\_\_.

\_\_\_\_\_  
Signature

Any questions? Please call Roger Dickens at Office: 904-252-8516 Mobile: 904-252-8516 Fax: Branch:

---